



BRIEF INFORMATION

Luminator Metal auxiliary spotlight



PRODUCT FEATURES

- Due to its impressive external dimensions, it is particularly suitable for trucks, large pick-ups and off-road vehicles.
- Housing, holder and ring made of die-cast zinc.
- ECE type-approved high beam for 12 and 24 V vehicle systems $\text{\textcircled{E}}$ 1928 (Ref. 37.5) and $\text{\textcircled{E}}$ 303 (Ref. 17.5).
- \varnothing 22 cm
- Weight: 2,600 g

CONTENTS OF PACKAGE

- H1 spotlight with position light
- W5W Attachment material
- Mounting instructions

Spotlight, 12 V / 24 V (ECE Ref. 37.5)	1F8 007 560-301
Spotlight, 12 V / 24 V (ECE Ref. 17.5)	1F8 007 560-011*

* not shown. with profiled lens

ACCESSORIES

Protective cap*	8XS 147 945-021
-----------------	------------------------

* Protective caps are not legally authorised in some countries. Before using them on public roads, please check with the relevant government agency..

RANGE OVERVIEW



Luminator Metal – Ø 22 cm

H3 foglight, black, with shaped fog lens. 12 or 24 V fog light with ECE type-approval (E) 18245. Weight: 1,500 g.



Fog light, 12 V/24 V

1N8 007 560-031



Luminator Metal CELIS® - Ø 22 cm

H1 spotlight black with round CELIS LED position light ECE type-approved high beam (E) 1753 for 12 and 24 V vehicle systems. Weight: 2,800 g.

Spotlight, 12 V / 24 V (ECE Ref. 37.5)

1F8 007 560-201



Luminator Compact Metal – Ø 17 cm

H1 Spotlight, black, with ECE type-approval (E) 1901 (Ref. 37.5) and (E) 1902 (Ref. 17.5). Weight: 1,500 g.
H7 foglight in black with ECE type-approval (E) 1901.

Spotlight, 12 V / 24 V (ECE Ref. 37.5)

1F3 009 094-021

Spotlight, 12 V / 24 V (ECE Ref. 17.5)

1F3 009 094-061

Fog light, 12 V / 24 V (not shown)

1N3 009 094-001



Luminator Compact Metal CELIS – Ø 17 cm

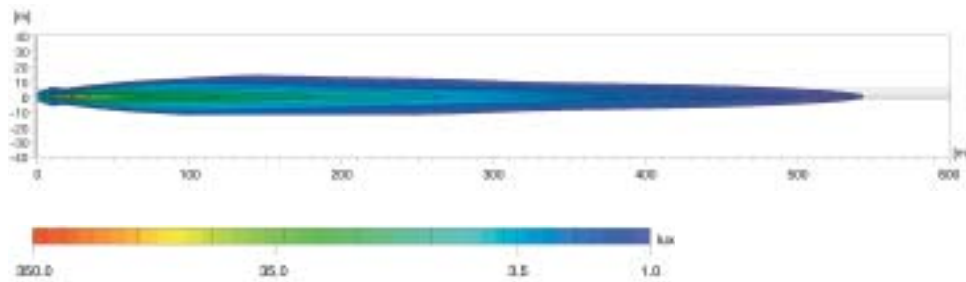
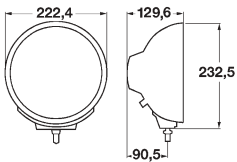
H1 spotlight black with round CELIS LED position light ECE type-approved high beam (E) 1901 for 12 and 24 V vehicle systems. Weight: 1,600 g.

Spotlight, 12 V / 24 V (ECE Ref. 37.5)

1F1 009 094-041

LIGHT DISTRIBUTION

ECE Ref. 37.5



Mounted: upright

Lux is the unit of illuminance.

It expresses the luminous flux from the light source that impinges on a specific area. For example; an office should be illuminated with at least 500 lux, and the human eye can still read a newspaper without any problems at 1 lux. The values under the lux axis show where the respective illumination intensity is achieved in the light distribution diagrams.

Ref. 50, 40, 37.5, 17.5 and 12.5:

The reference number (Ref.) is a value which refers to the spotlight. According to ECE ruling, this reference number must not exceed the upper limit of 100 per vehicle. This figure includes the values for the two standard high beams (left and right headlights) plus those of any other installed spotlights. The appropriate value is engraved on the lens of each approved headlight.

www.hella.com/eliver



See the light!



Additional headlights from HELLA. The right light for every application. Test online now!

www.hella.com/lightshow www.hella.com/truck www.hella.com/offroad www.hella.com/eliver